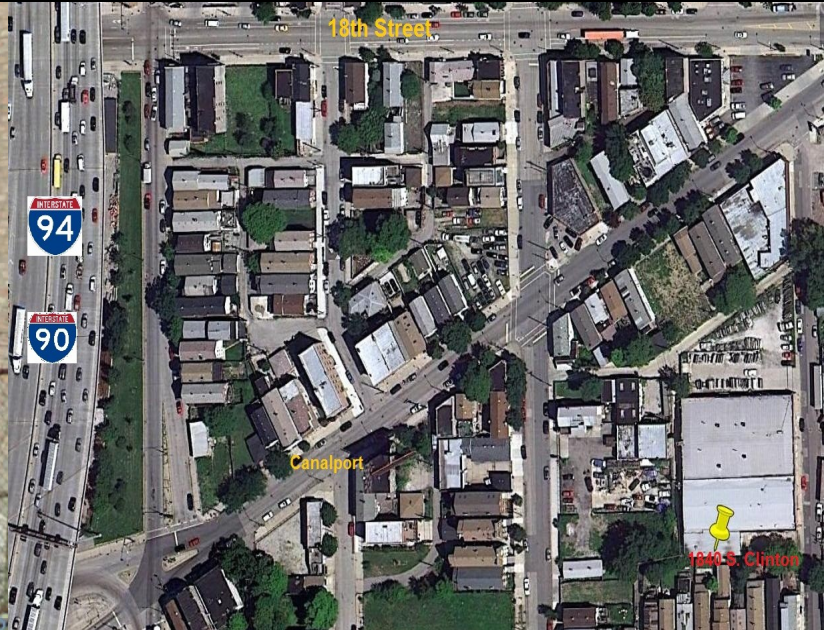


1840 S. Clinton Street
Chicago, IL



3350 South Kedzie • Chicago, Illinois 60623
773.254.0888 Phone • 773.254.0885 Fax
www.chicagoindustrialre.com

FOR LEASE - 2,000 SF CLEAR SPAN ONE STORY WITH PARKING



Contact

Matt Rogatz, SIOR
mattr@chicagoindustrialre.com
Direct: 773.254.9555
Cell: 773.719.4441

Beverly Hayes
beverly@chicagoindustrialre.com
Direct: 773.254.0888 Ext. 104
Cell: 708.819.5979

Professional Affiliations...



Specifications

Building Size:	2,000 SF
Lot Size:	3,968 SF
Description:	Clear span one story
Loading:	One drive in door
Office Size:	250 SF
Ceiling Height:	16'
Power:	200 amps - 3 phase
Bay Sizes:	Clear span
Zoning:	M2-3
Parking:	1,968 SF
Lease Price:	\$1,450 per month
Sale Price:	Subject to offer
Taxes:	\$3,910.51 (2009)

Comments

- Can be combined with 9,360 SF & 14,000 SF adjacent buildings
- 1,968 SF fenced lot
- Air lines throughout
- Good labor pool & easy access to public transportation
- Just a few blocks to expressway and minutes to downtown