

# 3815 S. Ashland Chicago, Illinois



3350 South Kedzie • Chicago, Illinois 60623  
773.254.0888 Phone • 773.254.0885 Fax  
www.chicagoindustrialre.com

## *Available for Sale or Lease (\$1.50 Gross!!!)*



### Property Specifications

Building Size: 383,195 Sq.Ft.  
Available Space: 220,320 Sq. Ft.  
Site Size: 5.47 Acres  
Office: To Suit  
Parking: Off Street  
Ceiling Heights: 9'-19'8"  
Bay Size: Varies  
Floor Load: 200-300 lbs  
Sprinklered: Yes  
Drive in Doors: 1  
Truck Level Docks: 15  
Zoning: PMD 8  
Sale Price: Subject to Offer  
Lease Rate: \$1.50-\$1.95 (Gross)  
(floors 2-4)

### Comments

- Located minutes to I55 & 190/94 expressway interchanges
- Excellent exposure

## *383,195 Sq. Ft (Divisible to 8,832 Sq. Ft.)*

### Contact

Matt Rogatz, SIOR  
mattr@chicagoindustrialre.com  
Direct - 773.254.9555  
Cell - 773.719.4441

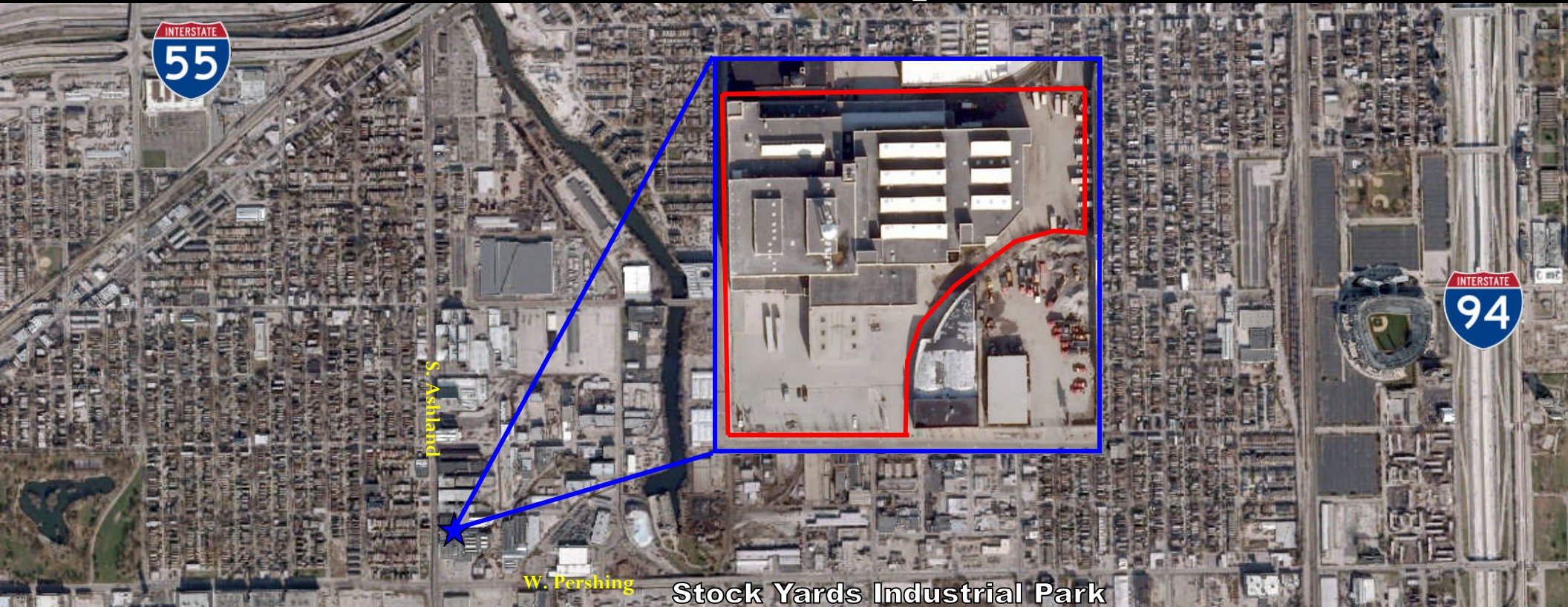
Colin Green  
coling@chicagoindustrialre.com  
Direct - 773.254.9777  
Cell - 630.272.9968

# 3815 S. Ashland Chicago, Illinois



3350 South Kedzie • Chicago, Illinois 60623  
773.254.0888 Phone • 773.254.0885 Fax  
www.chicagoindustrialre.com

## Location Map



***For Sale or Lease, 383,195 Sq. Ft (Divisible)***

### Contact

Matt Rogatz, SIOR  
mattr@chicagoindustrialre.com  
Direct - 773.254.9555  
Cell - 773.719.4441

Colin Green  
coling@chicagoindustrialre.com  
Direct - 773.254.9777  
Cell - 630.272.9968

### Professional Affiliations...

