

# 100 Winski Drive Michigan City, Indiana



2845 W. 48th Place • Chicago, Illinois  
60632

773.254.0888 Phone • 773.254.0885 Fax

## Property Specifications

**Space A: 1,500 SF (clear span)**  
Parking: Ample  
Office: To Suit  
Ceiling Heights: 10'  
Loading: 2 Drive in doors  
Power: 100 Amps  
Lease Price: \$750/month

**Space B: 3,200 SF (clear span)**  
Parking: 20,000 SF  
Office: To suit  
Celning Heights: 10'  
Loading: 3 drive in doors  
Lease Price: \$1,275/month

Zoning: Industrial

- Tons of off street parking!
- New metal roof
- New lighting!
- Sale Price: \$149,000

All information contained herein is from sources deemed reliable and is submitted subject to errors, omissions and to change of price or terms without notice.

## *For Lease 1,500 - 3,200 Sq. Ft.*



## *CLEAN CLEAR SPAN SPACE with DRIVE IN DOORS*

### Contact

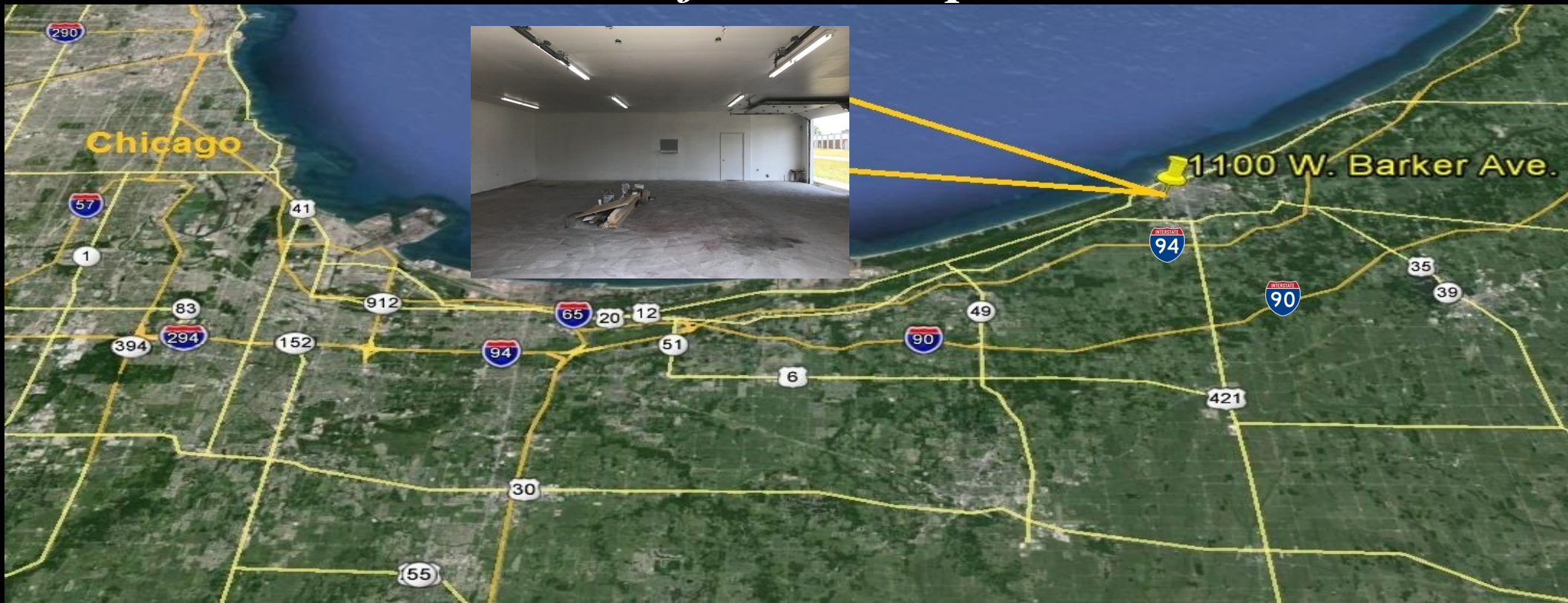
Matt Rogatz  
mattr@cirecommercial.com  
Direct - 773.254.9555  
Cell - 773-719-4441

# 100 Winski Drive Michigan City, Indiana



2845 W. 48th Place • Chicago, Illinois 60632  
773.254.0888 Phone • 773.254.0885 Fax  
www.cirecommercial.com

*Hard to find small spaces*



*For Lease - Manufacturing/Warehouse Space with Tons of Parking!*

## Contact

Matt Rogatz  
mattr@cirecommercial.com  
Direct - 773.254.9555  
Cell - 773.719.4441

Professional Affiliations...

