

# 4800 S. Richmond Chicago, IL 60632



2743 W. 36th Place • Chicago, Illinois 60632  
773.254.0888 Phone • 773.254.0885 Fax  
www.chicagoindustrialre.com

## ***GREAT SPACE - 1,000 SF to 7,800 SF***



### Property Specifications

Building Size: 60,000 SF  
Space Available: 1,000 and 7,800 Sq. Ft.  
Office: To suit  
Parking: Available  
Ceiling Heights: 12' Clear  
Bay Size: Vary  
Sprinklered: Wet System  
Drive in: 3  
Zoning: M2-3  
Monthly Rates: \$5.50-\$14.21/Gross

### Comments

- Excellent facility for small industrial users
- Minutes to I55 expressway & close to downtown Chicago
- Each space has a drive in door!

## ***Inexpensive Small Manufacturing - Warehouse Spaces!***

### Contact

Matt Rogatz  
mattr@chicagoindustrialre.com  
Direct - 773.254.9555  
Cell - 773.719.4441

All information contained herein is from sources deemed reliable and is submitted subject to errors, omissions and to change of price or terms without notice.

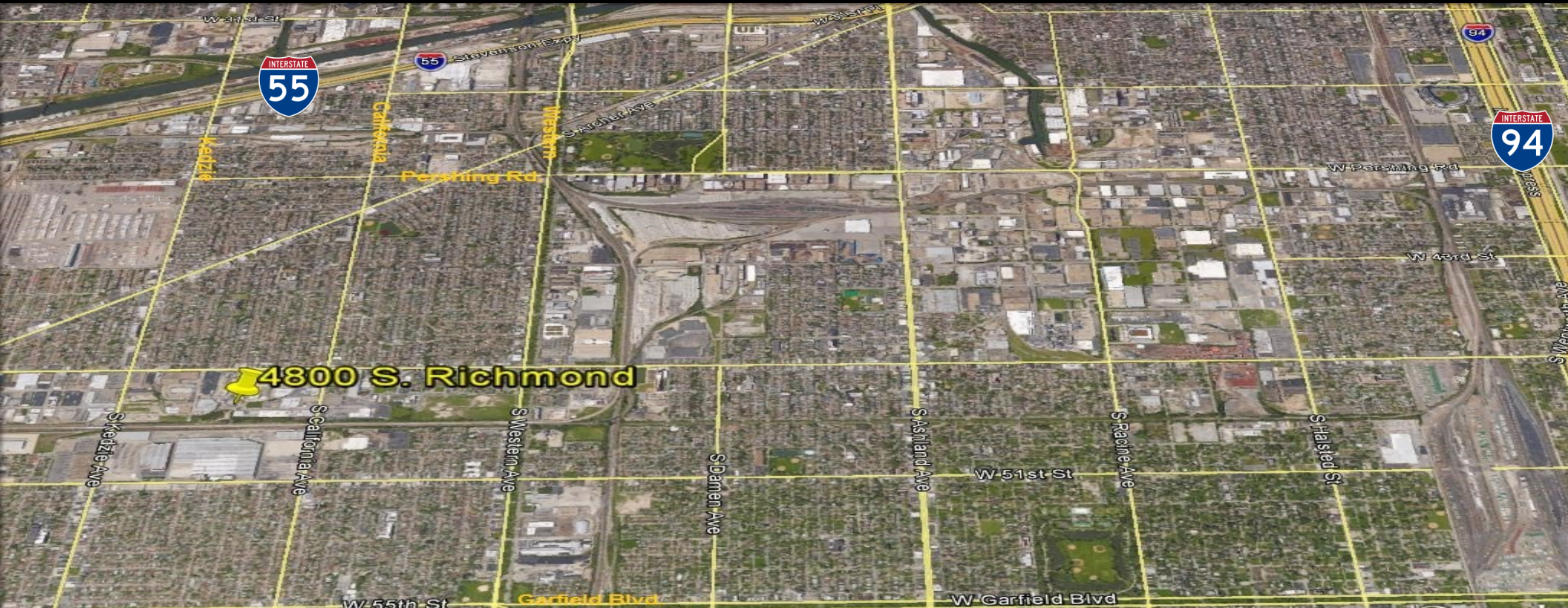


# 4800 S. Richmond Chicago, IL



2743 W. 36th Place • Chicago, Illinois 60632  
773.254.0888 Phone • 773.254.0885 Fax  
[www.chicagoindustrialre.com](http://www.chicagoindustrialre.com)

*Perfect Space for the Small User!!!!*



*For Lease - Multi Tenant Manufacturing - Distribution Building*

## Contact

Matt Rogatz  
Chicago Industrial Real Estate  
773-254.9555 (office)  
773-719-4441 (cell)  
[www.chicagoindustrialre.com](http://www.chicagoindustrialre.com)

Professional Affiliations...

