

2101 N. Cicero, Chicago, Illinois



3350 South Kedzie • Chicago, Illinois 60623
773.254.0888 Phone • 773.254.0885 Fax
www.chicagoindustrialre.com

For Sale - 7,200 SF. Corner Building

Property Specifications

Building Size: 7,200 sq. ft.
Land Size: 7,200 sq. ft.
Ceiling Heights: 10'-16'
Loading: One interior truck dock
Zoning: C1
Power: 400 Amps
Taxes: \$16,000

Sale Price: \$450,000

Comments

- One story flex building on stop light corner.
- Newly renovated .
- Good Northwest side location with excellent visibility.
- Interior loading dock & 15' ceiling heights in rear section.
- Three separate spaces –ideal for multi-tenant use.



Corner Location on Busy Cicero Avenue

Contacts

John Stocco
johns@chicagoindustrialre.com
Direct - 773.254.9777
Cell - 312.927.2430

All information contained herein is from sources deemed reliable and is submitted subject to errors, omissions and to change of price or terms without notice.

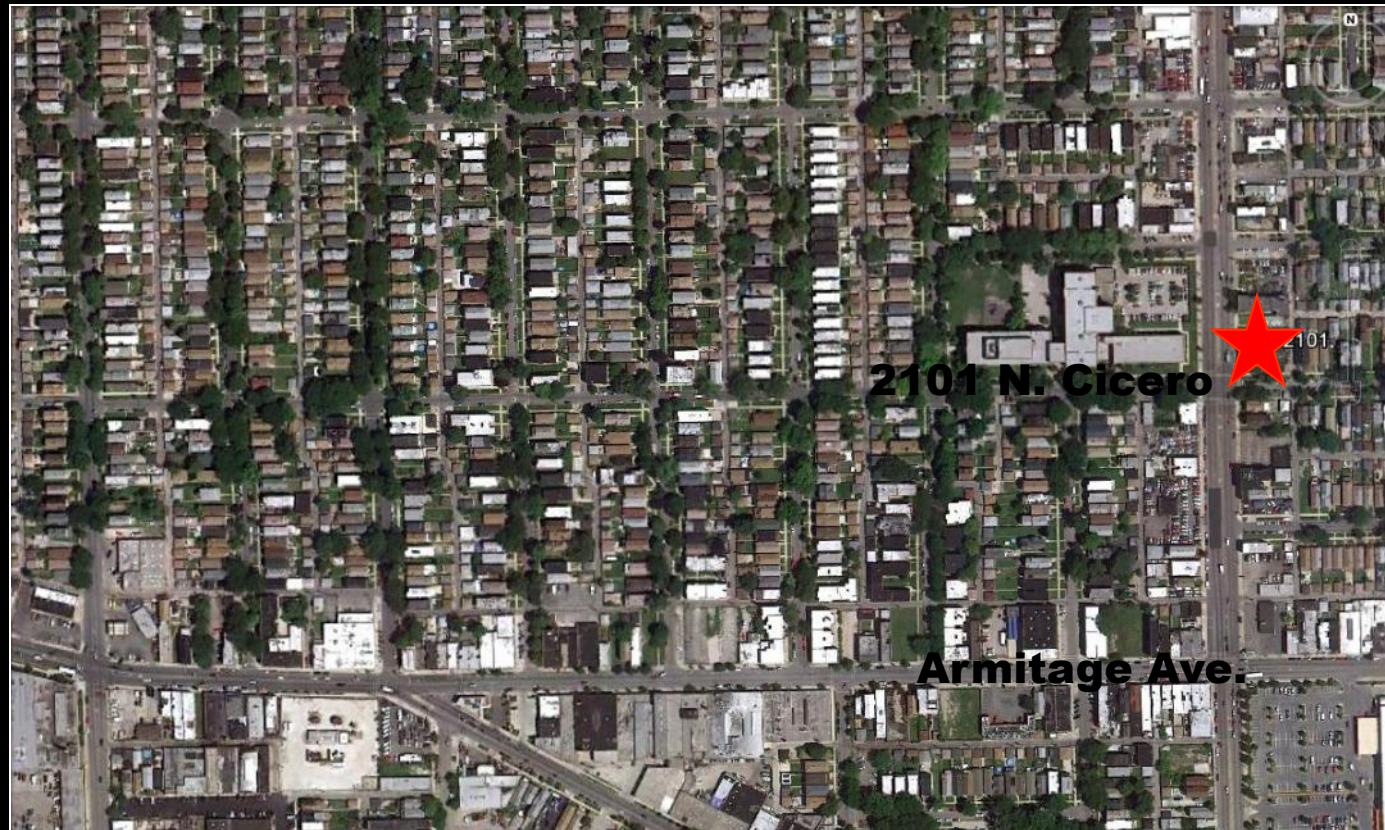
2101 N. Cicero, Chicago, Illinois



3350 South Kedzie • Chicago, Illinois 60623

773.254.0888 Phone • 773.254.0885 Fax

www.chicagoindustrialre.com



For Sale - 7,200 SF. Corner Building on Cicero Ave.

Contact

John Stocco

Direct - 773.254.9777

Cell - 312.927.2430

Professional Affiliations...

