

3159 W. 36th Place Chicago, Illinois



2845 W. 48th Place • Chicago, Illinois 60632
773.254.0888 Phone • 773.254.0885 Fax
www.chicagoindustrialre.com

Property Specifications

Building Size: 10,000 Sq. Ft.
Office: 1,000 Sq. Ft.
Parking: 40,750 Sq. Ft.
Ceiling Heights: 16' - 26'
Bay Size: 35' x 29'
Power: 400 Amps
Drive In Doors: 2
Zoning: M2-2
Lease Rate: \$4.95 Gross

Comments

- High ceilings!
- Wide bays!
- Off street parking!
- Just off I55 expressway!

For Lease - 10,000 SF Bldg. with Parking!



Crane Facility with Parking

Contact

Matt Rogatz
mattr@chicagoindustrialre.com
Direct - 773.254.9555
Cell - 773.719.4441

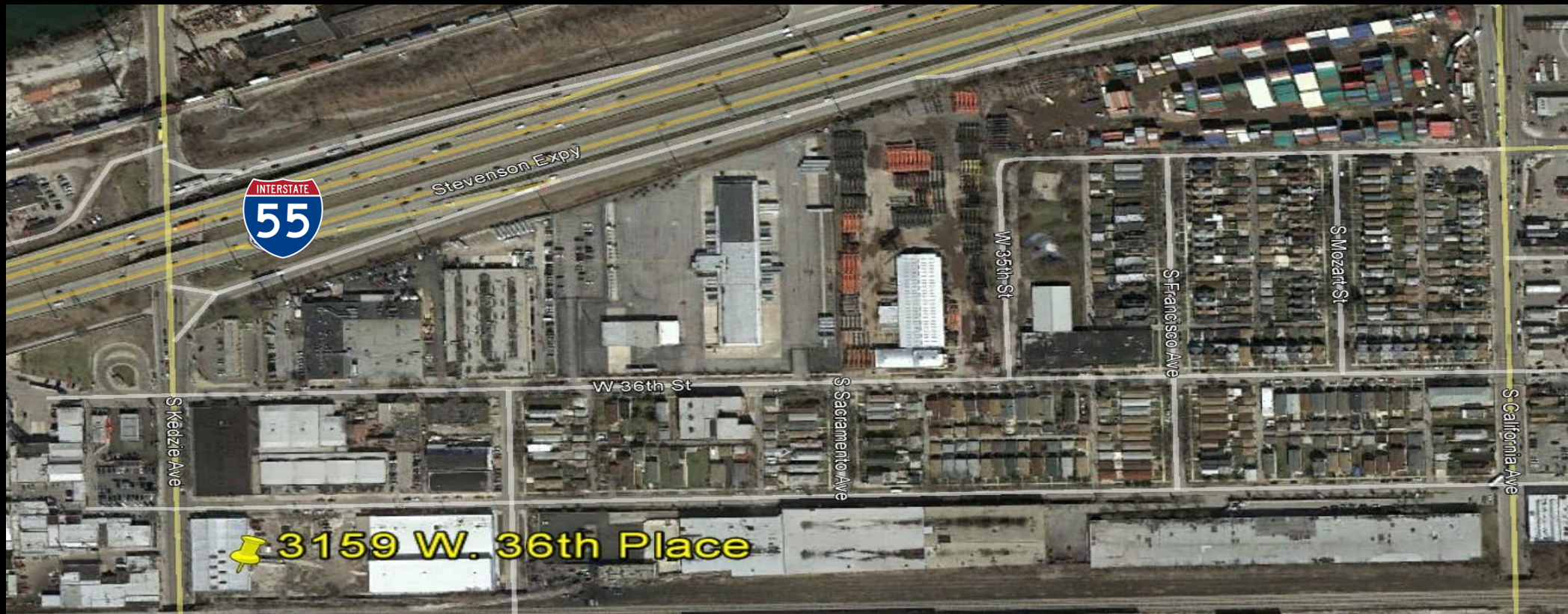
All information contained herein is from sources deemed reliable and is submitted subject to errors, omissions and to change of price or terms without notice.

3159 W. 36th Place Chicago, Illinois



2845 W. 48th Place • Chicago, Illinois 60632
773.254.0888 Phone • 773.254.0885 Fax
www.chicagoindustrialre.com

Location Map



For Lease - 10,000 Sq. Ft. Facility

Contact

Matt Rogatz

mattr@chicagoindustrialre.com

Direct - 773.254.9555

Cell - 773.719.4441

Professional Affiliations...

