

# 6801 W. 66th Place Bedford Park, IL



2743 W. 36th Place • Chicago, Illinois 60632  
773.254.0888 Phone • 773.254.0885 Fax  
www.chicagoindustrialre.com

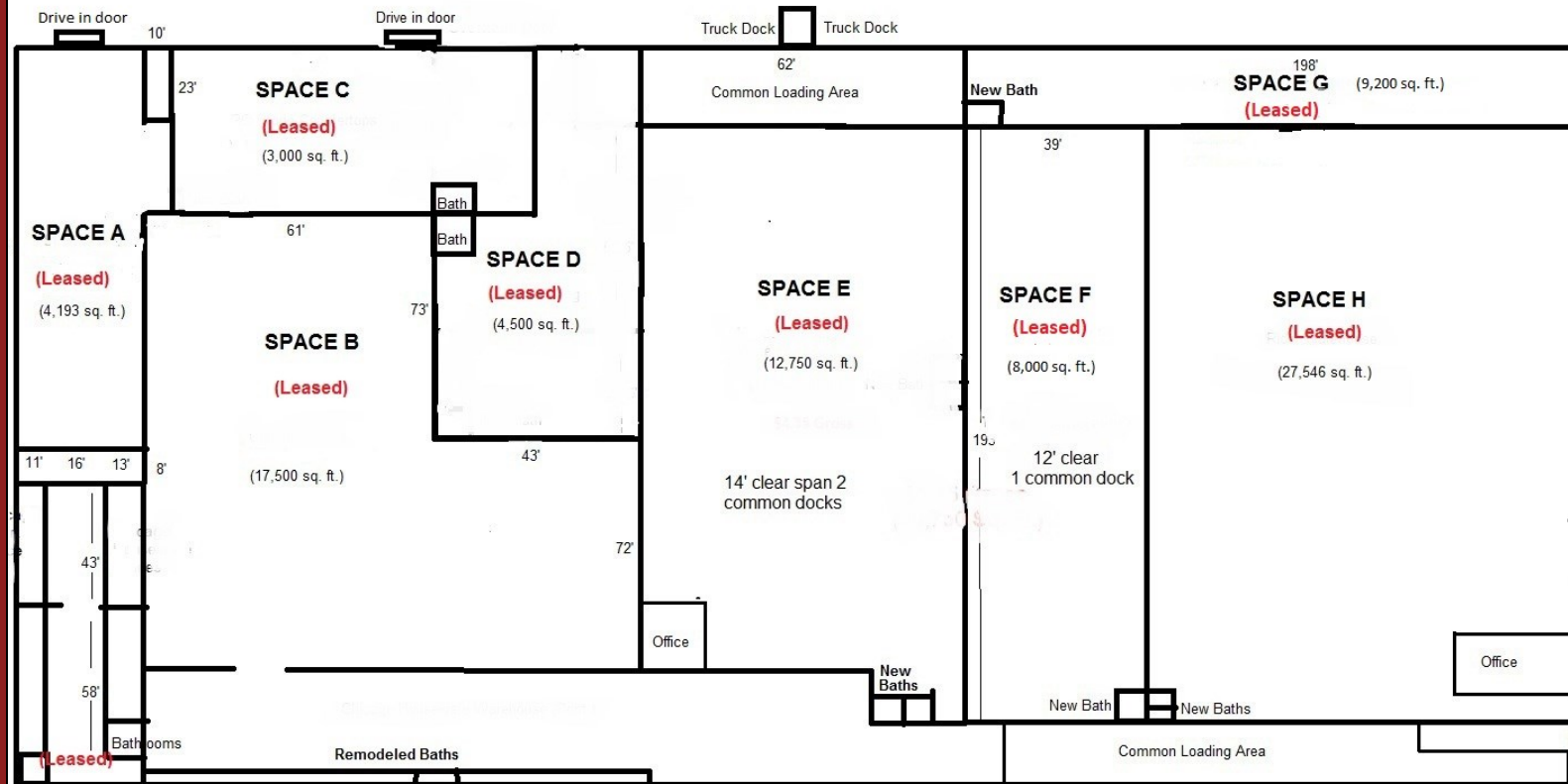
## Property Specifications

Building Size: 109,000 Sq. Ft.  
Space Available: 0 Sq. Ft.  
Site Size: 136,000 Sq. Ft.  
Office: 3,500 Sq. Ft. (approx.)  
Parking: Up to 50 cars  
Ceiling Heights: 12' - 20' Clear  
Bay Size: Vary  
Sprinklered: Wet System  
Truck Level Docks: 12  
Drive-in Doors: 5  
Zoning: Industrial  
Annual Income: \$412,409  
Taxes: \$101,070  
Sale Price: \$3,495,000

## Comments

- Paved & fenced parking
- Excellent facility for many types of users
- Complete roof tear off in 2014
- All Tenants seperately metered
- Minutes to Midway Airport & I55 expressway

## 109,000 SQ. FT. FULLY LEASED



## Warehouse - Manufacturing Space with Parking

### Contact

Matt Rogatz  
mattr@chicagoindustrialre.com  
Direct - 773.254.9555  
Cell - 773.719.4441

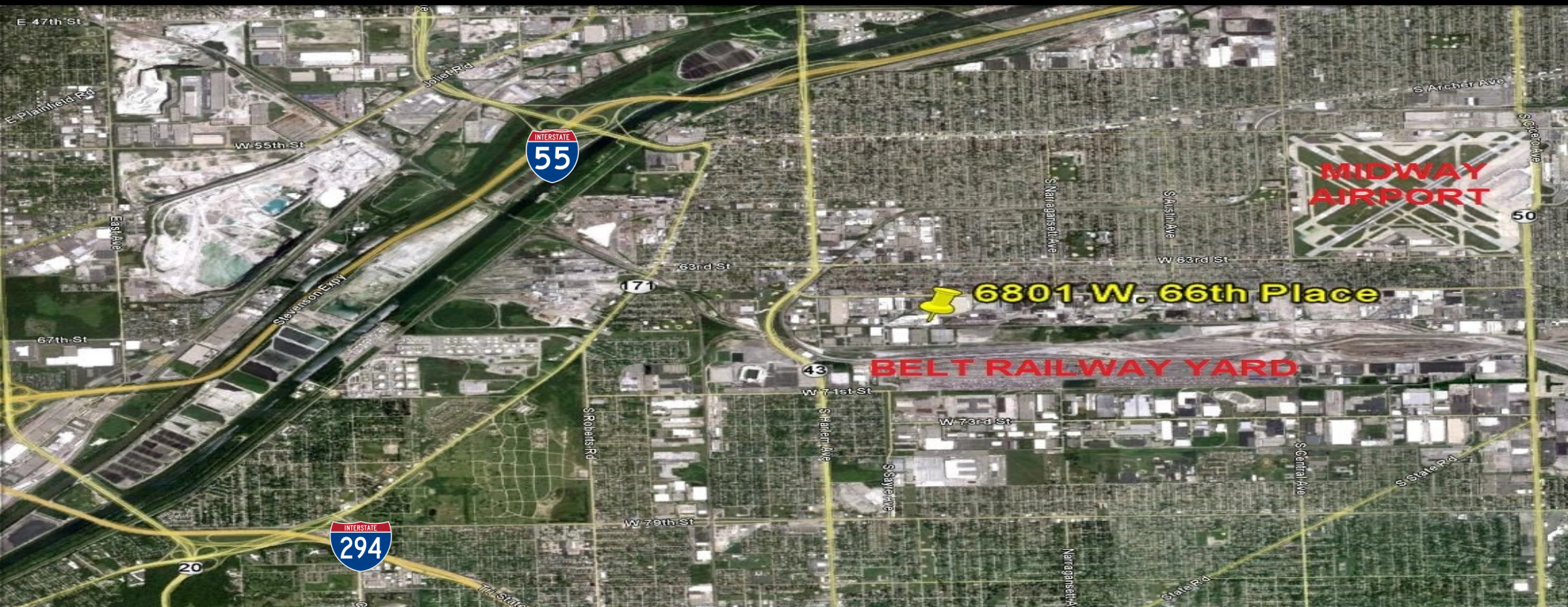
# 6801 W. 66th Place Bedford Park, IL



2743 W. 36th Place • Chicago, Illinois 60632  
773.254.0888 Phone • 773.254.0885 Fax

[www.chicagoindustrialre.com](http://www.chicagoindustrialre.com)

## Location Map



## Fully Leased - Manufacturing—Distribution Building

### Contact

Matt Rogatz  
Chicago Industrial Real Estate  
773-254.9555  
[www.chicagoindustrialre.com](http://www.chicagoindustrialre.com)

Professional Affiliations...

